



PML-PAL Catalog of Products



Contents

Turning Air Chucks	2
Grinding Air Chucks	3
Milling Chucks	4
Stationary w/thru Hole	5
Diaphragm Chucks	6
Air Chuck Jaws	8
Air Feed Tubes	9

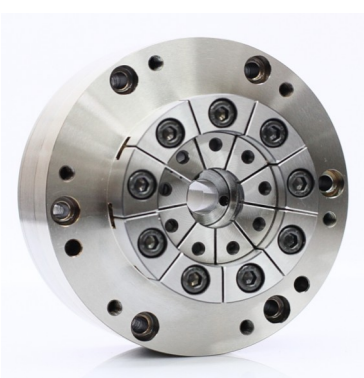
Henri Azaria P.A.L. provides R&D manufacturing solutions, custom-made parts and design services. Services include comprehensive technical support services, from assistance and consultation prior to purchase to ongoing training and repair services. Highly adaptable, the company prides itself on short production times and produces both large and small quantities including single parts. The finished products are thermally treated and coated or painted according to client specifications. The company is licensed by the Israeli Standard Institute and endorsed by Israeli high-tech industries.

PML-PAL
Precision Air Chucks





Model DCQ3-8TH9



Model DC4-9TH16



Model DC6-TH40

Super High Precision Diaphragm Chuck

Repeatability – The repeatability of this chuck is within 0.0005MM. It is guaranteed for long period.

Stable clamping – Work piece clamping is stable even at over 8000 rpm. Its unique design allows the jaws not to be affected by centrifugal force, assuring sub-micron accuracy and a super fine finish.

Flexible clamping power – Clamping is flexible in the cases of both internal and external chucking. The air pressure can be adjusted with great flexibility to the value, which suits an application by an air regulator. This feature enables the machining of “thin walls” without deforming the part dimensions.

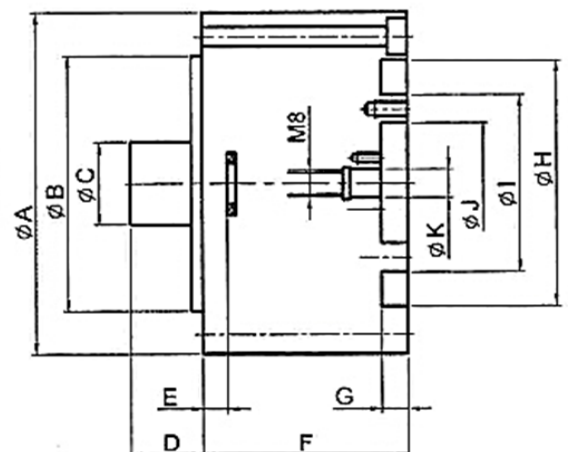
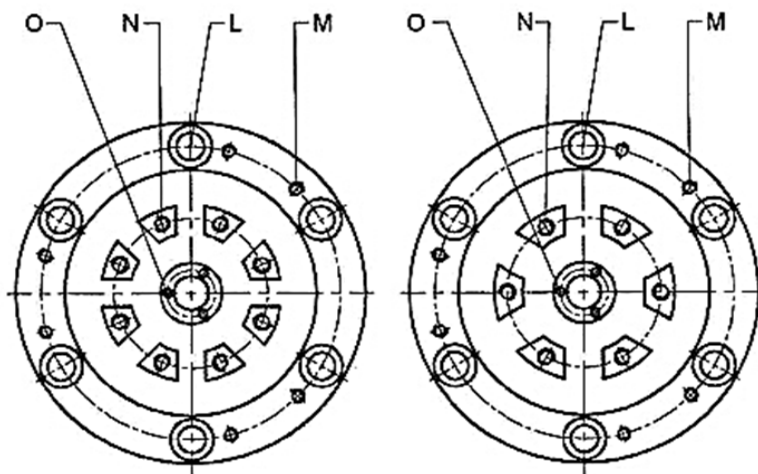
Maintenance free – This air chuck does not require lubrication. A unique design prevents penetration of cutting chips swarfing into the chuck body. Thus, this DC is ideal for any CNC turning, vertical machining and precise grinding operation.

High durability and stability – The jaw and front cover are made of special materials that have been heat-treated to maintain rigidity and accuracy over the long term.

Flexible application – This chuck can accommodate both internal and external chucking. Back stops can be designed inside the work piece, and outside by utilizing the external flange.

High speed turning ability – The standard model can be rotated up to 8,000 rpm. Our special faster model includes internal weights for counter balance, which can rotate at more than 11,000 rpm.

The high precision diaphragm air chuck size ranges from 80MM to 200MM. Customer may order thru hole Diaphragm Chuck upon request. A diaphragm tandem chuck is available in 100MM and 150MM.



Super High Precision Diaphragm Chuck

Mechanical parameters in MM									
Model	No. Splits	A	B	C	D	E	F	G	I
DC3B	6/8	80	50.8	21	17	7	45	5	38
DC3B-Q	6/8	80	50.8	-	-	-	42	5	38
DC4	6/8	101	82.6	22	15	7	47	8	62
DC4B	6/8	101	82.6	22	15	7	50	8	62
DC4B-Q	6/8	101	82.6	-	-	-	50	8	62
DC4R	6/8	100	82.6	21	17	8	53	6	48
DC4BR	6/8	100	82.6	23	17	8	53	6	48
DC4TH12	6/8	101	82.6	-	-	-	47	8	62
DC5	6/8	127	102	22	13	9	42	-	70
DC5BTH26	6/8	127	102	-	-	-	59	9	75
DC6	6/8	150	125	22	13	9	52	10	80
DC6B	6/8	150	125	22	13	9	53	10	80
DC6B-Q	6/8	150	125	-	-	-	53	8	80
DC6BR	6/8	150	125	22	13	9	61	8	80
DC6TH40	6/8	150	125	-	-	-	52	10	80

Mechanical parameters in MM									
Model	No. Splits	J	K	L,M-PCD	M	N	N-PCD	O	Weight (kg)
DC3B	6/8	25	7	70	-	M4-8	31.5	-	1.3
DC3B-Q	6/8	25	7	70	-	M4-8	31.5	-	1.25
DC4	6/8	44	10	88.9	M5-6	M5-8	52	M3-3	2
DC4B	6/8	44	10	88.9	M5-6	M5-8	52	M3-3	2.3
DC4B-Q	6/8	44	10	88.9	M5-6	M5-8	52	M3-3	2
DC4R	6/8	32	10	88.9	M5-6	M5-8	40	M3-3	2.3
DC4BR	6/8	32	10	88.9	M5-6	M5-8	40	M3-3	2.4
DC4TH12	6/8	44	12	88.9	M5-6	M5-8	52	-	2
DC5	6/8	50	11	114.3	-	M5-8	60	M3-3	3.5
DC5BTH26	6/8	55	26	114.3	-	M5-8	65	-	4.3
DC6	6/8	60	11	135.89	M5-10	M6-8	70	M3-3	5.2
DC6B	6/8	60	11	135.89	M5-6	M6-8	70	M3-3	5.5
DC6B-Q	6/8	60	11	135.89	M5-6	M6-8	70	M3-3	5.2
DC6BR	6/8	60	11	135.89	M5-6	M6-8	70	M3-3	5.8
DC6TH40	6/8	60	40	135.89	M5-6	M6-8	70	-	5.2